

Unlocking the Secrets of SMB Valuation: A Comprehensive Guide to Understanding Company Value

By analyzing each company's unique business model, we can better understand the underlying drivers of value and provide a more accurate valuation that reflects the business's true potential.

Lukas Hertig

[Tweet](#)

1 Introduction

1.1 The Critical Role of Accurate Valuation in the SMB Landscape



Determining the accurate value of a small or medium-sized business (SMB) is essential for various reasons, such as selling or buying a business, securing financing, attracting

investors, and for estate planning purposes. However, the valuation process can be complex, mainly due to the unique characteristics of SMBs. This guide will provide an in-depth look at various valuation methods and factors, enabling business owners and investors to understand better how to determine a company's value accurately.

1.2 Key Valuation Methods and Factors: An Overview

Before diving into the specific methods and factors that play a role in SMB valuation, it's important to provide a general understanding of the key methods and factors. The most commonly used methods include the Net Asset Value Method, Capitalized Earnings Methods (Simple Capitalized Earnings and [Discounted Cash Flow](#)), Mean Value Methods, and Market Value Methods. Each method has its advantages and limitations, which we will explore in detail throughout this guide. Additionally, the role of company size, industry, business model, and owner's profit will be examined, as they significantly impact the valuation process.

2 Valuation Methods in Brief



Before diving into the specifics of each valuation method, it's crucial to have a basic understanding of the most popular approaches used in SMB valuation. These methods provide a framework for determining a company's worth, considering various financial and operational aspects. Each approach has unique features and limitations, so selecting the method that best suits your business's specific circumstances is essential. In this section, we will offer a concise overview of the following methods:

- Net Asset Value Method
- Capitalized Earnings Methods
- Simple Capitalized Earnings Method
- Discounted Cash Flow Method
- Mean Value Methods
- Market Value Methods
- Impact of Industry, Business Model and other considerations
- Companies with no or even negative value

In the subsequent sections of this guide, we will explore these methods in greater detail, discussing their applications, advantages, and limitations.

3 Net Asset Value Method



3.1 Definition and Application of the Net Asset Value Method

The [Net Asset Value](#) (NAV) method is a widely used valuation approach that calculates a company's worth by subtracting its total liabilities from its total assets. In essence, the NAV method represents the net value of a company's assets, assuming all debts are paid off. This method is particularly suitable for businesses with significant tangible assets, such as real estate, machinery, or equipment.

3.2 Advantages and Limitations of the Net Asset Value Method

Advantages:

- **Simplicity:** The NAV method is relatively straightforward to calculate, primarily involving the company's [balance sheet](#) data.
- **Tangible assets:** This method is suitable for asset-heavy companies, where most of the company's value is derived from its physical assets.

Limitations:

- **[Intangible assets:](#)** The NAV method often overlooks intangible assets, such as intellectual property, brand value, and customer relationships. This can lead to undervaluing companies with significant intangible assets.
- **Future earnings potential:** NAV does not consider the company's future earnings potential or growth prospects, which are crucial factors for many investors.
- **Limited applicability:** This method is less suitable for companies in industries that rely heavily on intangible assets, such as technology or services businesses, as it

does not adequately capture their value.

- Static view: The NAV method provides a static snapshot of a company's value, which may not be the best representation of its worth in a constantly changing business environment.

In contrast, the EBITDA multiples method discussed later, considers both tangible and intangible assets and reflects a company's future earnings potential. This makes it a more comprehensive and accurate approach to valuation, particularly for SMBs that often have significant growth prospects and intangible assets.

4 Capitalized Earnings Methods

4.1 The Simple Capitalized Earnings Method



The Simple Capitalized Earnings Method, also known as the Capitalization of Earnings Method, is an income-based valuation approach. It calculates a company's value by dividing its annual earnings (usually normalized to account

for fluctuations) by a capitalization rate, which represents the required rate of return for an investor. The capitalization rate typically considers factors such as industry risk, [market conditions](#), and the company's growth prospects.

4.2 Discounted Cash Flow Method

The Discounted [Cash Flow](#) (DCF) Method is another income-based valuation approach that projects a company's future cash flows and discounts them back to their present value using a discount rate, which reflects the investor's required rate of return. The DCF method considers the [company's future growth potential](#) and provides a more dynamic view of its value.

4.3 Advantages and Limitations of Capitalized Earnings Methods

Advantages:

1. Income-based: Capitalized Earnings Methods focus on a company's earnings potential, making them suitable for valuing businesses with solid revenue streams and growth prospects.
2. Consideration of risks: The capitalization [rate and discount](#) rate account for various risks, such as industry risk and market conditions, making these methods more comprehensive.

Limitations:

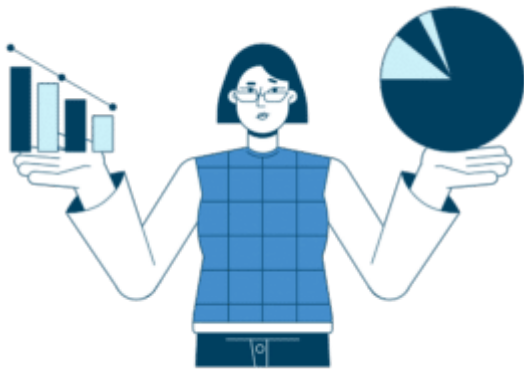
1. Dependence on assumptions: The Simple Capitalized Earnings Method and the DCF Method rely on assumptions, such as projected earnings or discount rates. The valuation may be inaccurate if these assumptions are incorrect or overly optimistic.
2. Complexity: The DCF method, in particular, can be

complex and time-consuming to calculate, requiring extensive financial modeling and forecasting.

In comparison, the EBITDA multiples method offers a more streamlined approach to valuation, using a widely accepted metric that captures both the company's earnings potential and operational efficiency. This makes the EBITDA multiples method a more practical and accurate choice for SMBs looking to determine their value in a dynamic market.

5 Mean Value Methods

5.1 Company Value (net) Formula



The Company Value (net) formula is a mean value method that combines the results of multiple valuation approaches to derive an average company value. The formula is as follows:

$$\text{Company value (net)} = \frac{x \times \text{capitalized value (net)} + y \times \text{asset value (net)}}{x + y}$$

In this formula, x and y are predetermined weights assigned to capitalized and asset values, respectively. Using a weighted average, the Company Value (net) formula aims to balance the strengths and weaknesses of different valuation methods to arrive at a more accurate and comprehensive valuation.

5.2 Swiss Method (also known as “practice method”)

The Swiss Method is another mean value method that specifically combines the capitalized value (net) and asset value (net) to determine a company's value. The formula for the Swiss Method is:

$$\text{Company value (net)} = 2 \times \text{capitalized value (net)} + \text{asset value (net)} / 3$$

The Swiss Method places more weight on the capitalized value (net), reflecting the belief that a company's earnings potential is a more important determinant of its value than its net assets.

5.3 Advantages and Limitations of Mean Value Methods

Advantages:

Comprehensive approach: Mean Value Methods combine multiple valuation methods to provide a more balanced and comprehensive assessment of a company's value.

Flexibility: By adjusting the weights assigned to different valuation methods, the formulas can be tailored better to suit the specific characteristics of a company or industry.

Limitations:

Subjectivity: Assigning weights to different valuation methods can be subjective, which may introduce bias into the final valuation.

Complexity: Mean Value Methods require calculating multiple valuation methods, increasing the complexity and time required to complete the valuation process.

While Mean Value Methods can offer a balanced approach to valuation, the EBITDA multiples method has several advantages that make it more suitable for SMB valuation. By focusing on a widely accepted and comprehensive financial metric, the EBITDA multiples method provides a straightforward and accurate approach that can better reflect the unique dynamics of SMBs in a constantly evolving market.

6 Market Value Methods

6.1 Introduction to Common Multiples



Market Value Methods utilize multiples to determine a company's value based on various financial metrics. These methods compare a company's financial performance to similar businesses within the same industry or market.

Common multiples used in valuations include:

1. Turnover multiple (very rare)
2. EBITDA multiple
3. EBIT multiple
4. Net profit multiple

These multiples are derived from historical data and industry benchmarks, providing a relative valuation that accounts for the market context.

6.2 Calculating Company Value Using Multiples

To calculate a company's [value using market](#) multiples, you multiply the chosen financial metric by the relevant multiple. For example:

- Company value (gross) according to turnover multiple = Turnover × turnover multiple
- Company value (gross) according to EBITDA multiple = EBITDA × EBITDA multiple
- Company value (gross) according to EBIT multiple = EBIT × EBIT multiple
- Company value (net = [equity](#) capital) according to pure-profit multiple = Pure profit × net-profit multiple

6.3 Advantages and Limitations of Market Value Methods

Advantages:

1. Market context: Market Value Methods consider the industry and market dynamics, providing a more accurate valuation compared to other companies in the same sector.
2. Versatility: Multiple financial metrics can be used to calculate the company value, allowing for a more comprehensive business analysis.

Limitations:

1. Dependence on comparable data: Market Value Methods rely on the availability of comparable data from other companies within the same industry, which may be limited or difficult to obtain, especially for niche businesses or rapidly evolving industries.

The EBITDA multiples method is a Market Value Method that has proven particularly effective for SMB valuation. The EBITDA multiples method offers a practical and accurate approach to determining a company's value within the broader market context by focusing on a comprehensive financial metric that accounts for both earnings potential and operational efficiency.

7 The Role of Company Size in Valuation

7.1 The Difference Between Smaller and Larger Companies in Valuation



Regarding company valuations, the size of the business can significantly impact the perceived value and the valuation multiples applied. Larger companies tend to have more stable revenue streams, significant market share, and extensive customer base. This stability and market presence can lead to higher valuation multiples than smaller businesses.

On the other hand, smaller companies often face more significant risks and uncertainties, which may result in lower valuation multiples. These risks can include fluctuations in revenue, a narrower customer base, and a higher dependency on specific clients or suppliers. Smaller companies may face challenges in scaling their operations or adapting to market

changes, further affecting their valuation.

7.2 Challenges Faced by Smaller Companies in Finding Buyers or Succession

Smaller businesses, especially those in the SMB space, can face unique challenges in finding buyers or [planning for succession](#). Some of these challenges include:

- **Limited pool of potential buyers:** Smaller businesses may have a smaller pool of potential buyers due to their niche markets, geographic location, or specific industry requirements.
- **Difficulty in securing financing:** Buyers of smaller businesses may need help in securing the necessary financing to complete the transaction, which can hinder the sales process.
- **Owner dependence:** Smaller companies are often highly dependent on their owners, making it difficult for potential buyers to envision a successful transition and maintain the same level of business performance after the sale.
- **[Succession planning](#):** Many SMB owners do not have a clear succession plan, which can create uncertainty and complications during the sales process.

In light of these challenges, SMBs must carefully consider the most appropriate valuation method for their business, considering their unique circumstances and potential hurdles. In many cases, a rather fair valuation rather than an inflated valuation (for example created by a broker) might reach your exit target expectations faster. Even if they might be slightly lower.

8 The Real EBITDA Multipliers

8.1 Explaining EBITDA Multipliers and Their Role in SMB Valuation



EBITDA Multipliers represent different tiers of valuation multiples applied to small and medium-sized businesses (SMBs) based on their performance, size, growth potential, and other vital factors. These layers help investors and business owners understand the value of a company within the context of the broader market, as well as the potential returns and risks associated with an [acquisition](#) or investment.

The EBITDA Multipliers range from lower multiples for smaller, owner-operated businesses with less growth potential, to higher multiples for larger, professionally managed businesses with solid growth prospects, established market positions, and significant barriers to entry.

8.2 Key Factors That Affect EBITDA Multipliers

Several key factors can influence the EBITDA Multipliers of a business, including:

1. **Business size:** Smaller businesses with lower revenues and earnings may be assigned lower EBITDA valuation multiples than larger businesses with higher revenues and earnings.
2. **Industry of the business:** Different industries have unique growth prospects, market dynamics, and risk factors that can affect the valuation multiples applied to companies within that sector.
3. **Growth potential:** Companies with strong year-over-year growth and promising market opportunities may receive higher valuation multiples.
4. **Management, operations, and owner dependency:** Businesses with professional management, well-defined niches, and operational optimization may attract higher valuation multiples. High owner dependency may result in a lower valuation.
5. **Barriers to entry and intellectual property:** Companies with significant barriers to entry, such as proprietary technology or intellectual property ownership, may be valued at higher multiples.
6. **Seller motivation:** A motivated seller who is eager to sell their business may accept a lower valuation multiple, while an unmotivated seller may demand a higher multiple.

Understanding the real EBITDA Multipliers can help SMB owners and investors make informed decisions about business valuations, considering each company's unique dynamics and characteristics. By selecting the EBITDA multiples method for valuation, businesses can better capture their actual value and potential within the market.

9 The Impact of Industry and Business Model on Valuation

9.1 The Influence of Industry on Company Valuations

The industry in which a company operates can significantly impact its valuation. Different industries have unique growth prospects, market dynamics, and risk factors that can affect the valuation multiples applied to companies within that sector. For example, in the SMB space, technology-based businesses may attract higher valuation multiples due to their potential for rapid growth. In comparison, traditional brick-and-mortar retail businesses may receive lower multiples due to market saturation and slower growth prospects.

9.2 The Role of Different Business Models in Valuation



The business model a company adopts can also play a crucial role in its valuation. Some examples include:

- Asset-light businesses: These [companies require minimal investment](#) in physical assets, often resulting in higher valuations due to lower capital requirements and higher scalability.

- **Asset-heavy businesses:** These companies rely on substantial investments in physical assets, such as manufacturing plants or equipment. This can lead to lower valuations because of higher capital requirements and potentially lower margins.
- **Subscription-based businesses:** Subscription models with predictable, recurring revenue streams can attract higher valuation multiples due to their stability and potential for customer retention.

9.3 Key KPIs and Their Importance

Key performance indicators (KPIs) play a crucial role in company valuations, providing insights into the business's performance, efficiency, and growth potential. Some important KPIs to consider include gross margin, customer acquisition cost, and lifetime value.

9.4 Product vs. Service Businesses

Product-based businesses often require more significant upfront investments in inventory and production but can achieve economies of scale with higher sales volumes. Service-based businesses, on the other hand, may have lower upfront costs but require ongoing investments in personnel and training. The valuation of these businesses may be influenced by factors such as market demand, scalability, and competitive landscape.

9.5 Customer Lifetime Value

(CLV)

Customer lifetime value (CLV) is an essential metric in company valuation. It measures the net profit a business can expect to generate from a customer over the entire duration of their relationship. A higher CLV can lead to a higher company valuation, suggesting a greater potential for long-term revenue generation.

9.6 Customer Acquisition Cost

Customer acquisition cost (CAC) is a critical metric for determining the efficiency of a [company's sales](#) and marketing efforts. A lower CAC indicates that the company can acquire new customers more cost-effectively, contributing positively to its valuation. Conversely, a high CAC may negatively impact the company's valuation due to increased expenses and potentially lower profitability.

9.7 Recurring Revenues

Recurring revenues, such as those generated by subscription-based businesses, can positively impact a company's valuation due to their predictability and stability. A business with a high percentage of recurring revenues will likely be valued more highly than one with more volatile income streams.

By understanding the impact of industry and business model on company valuations, SMB owners and investors can make more informed decisions and better assess the true value of a business within its specific market context.

10 The Importance of Owners'

Profit

10.1 Definition and Role of Owners' Profit in SMB Valuation



Owners' profit refers to the income available to the business owner for investing in future growth, paying out as a salary, bonus, or dividend. In small and medium-sized businesses (SMBs), owners' profit plays a crucial role in determining the company's value. This metric provides insight into the financial health and performance of the business, considering the unique dynamics of an owner-managed company.

10.2 Calculating Owners' Profit on the EBITDA Level

To calculate owners' profit on the EBITDA level, start with the EBITDA (earnings before interest, taxes, depreciation, and amortization) figure from the company's financial statements. EBITDA is a widely used metric to assess a company's performance, as it is not influenced by financing structure or investment cycles.

Next, add back the gross salary of the owner, including social security contributions, and make any necessary adjustments for

other items affecting the owners' profit, such as non-recurring income or expenses. The resulting figure represents the owners' profit on the EBITDA level, which can be used to establish the company's value.

10.3 The Relevance of Owners' Profit in Small and Medium-Sized Companies

In the context of SMBs, owners' profit is significant for company valuation for several reasons:

- **Owner involvement:** SMBs are often closely tied to their owners, who may play a significant role in the company's operations and strategic decisions. Owners' profit is a proxy for the financial performance and value of the business under the current owner's management.
- **Personal expenses:** SMB owners may have their companies cover some of their personal expenses. Adjusting for these items in the calculation of owners' profit provides a more accurate reflection of the business's true financial performance.
- **Comparison with industry peers:** When calculated consistently across companies, owners' profit allows for more accurate comparisons between businesses in the same industry and market segment.

By considering owners' profit in the valuation process, [SMB owners and investors can better understand the business's actual value and make more informed decisions about potential acquisitions or investments.](#)

11 Other Considerations in SMB

Valuation: Financial vs. Strategic Buyers and the Role of Debt

11.1 Financial Buyers vs. Strategic Buyers



When [selling a business](#), it's essential to understand the difference between financial and strategic buyers, as this can impact the company's valuation.

- **Financial buyers:** These buyers are typically [private equity](#) firms or individual investors primarily interested in the financial return on their investment. They may seek to improve the company's performance through cost reduction, operational efficiency, or other measures to increase profitability and ultimately sell the business for a higher price.
- **Strategic buyers:** These are usually other companies that see synergies or strategic advantages in acquiring the target business. They may be interested in the company's customer base, technology, intellectual property, or other assets that can enhance their existing operations or help them enter new markets.

11.2 Impact on Valuations

The type of buyer can significantly influence the valuation of a business. Strategic buyers may be willing to pay a premium for a company that offers synergies, competitive advantages, or other strategic benefits, leading to higher valuations. In contrast, financial buyers typically focus on the potential return on investment. They may be more conservative in their valuations, seeking opportunities for value creation through operational improvements or other measures.

11.3 The Role of Debt in Valuations

Debt can play a crucial role in company valuations. Businesses with higher debt levels may be viewed as riskier investments, which can negatively impact their valuation. Conversely, companies with low debt levels and strong [cash flows](#) may be valued more highly, as they have more financial flexibility to invest in growth opportunities or weather economic downturns.

When assessing a company's valuation, it's essential to consider its [debt](#) structure and overall financial health. This can provide valuable insights into the company's ability to manage its obligations, invest in growth opportunities, and ultimately generate value for the owner or potential acquirer.

By considering these additional factors in SMB valuations, business owners and investors can gain a more comprehensive understanding of the business's true value and the potential risks and opportunities associated with a sale or acquisition.

12 Understanding Companies with

Zero or Negative Value and Turnaround Opportunities



Yes, In some cases, a company may have no or even negative value due to various factors such as financial challenges, legal issues, or an inability to generate future income.

Some situations that could lead to a company having no value include:

- More liabilities than assets
- No prospects for generating future income and liquidity issues in general, not being able to fund the needed [working capital](#) from revenues and profits
- Liquidation costs exceeding the value of the company's assets
- Legal or reputational issues affecting the company's viability

Although companies with zero or negative value may be poor investment prospects, some investors and firms, like ours, see potential in turnaround opportunities. Our firm carefully analyzes these opportunities, considering the potential for growth and the ability to [manage risks](#) associated with the distressed company.

When exploring turnaround opportunities, we employ a strategic approach that includes:

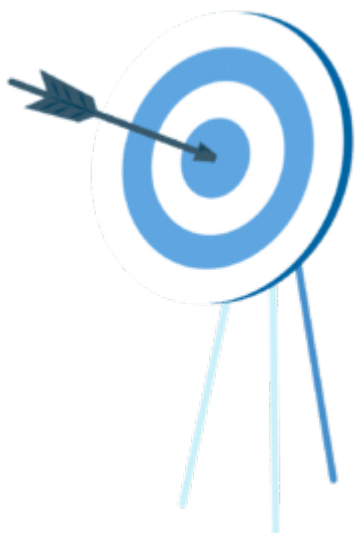
- Comprehensive [due diligence](#): Rigorously examining the company's financials, legal issues, industry position,

and potential for future growth.

- Risk management: Identifying potential risks and implementing measures to minimize or mitigate these risks during the turnaround process.
- Strategic planning: Developing a tailored plan for restructuring the company, focusing on its strengths and areas of opportunity for growth.
- Resource allocation: Ensuring the company has the right resources, including capital, management expertise, and operational support, to execute the turnaround plan effectively.

By taking this cautious and strategic approach, our firm can unlock the potential of companies with zero or negative value, turning them into successful, thriving businesses and secure both the employees and customers of this business.

13 The Rationale Behind Our Company's Focus



At our company, we understand that each business is unique and requires a tailored valuation approach. To ensure accurate and insightful valuations, we focus on four key factors: EBITDA multiples, industry, business model, and company size.

13.1 EBITDA Multiples

EBITDA multiples are widely regarded as one of the most reliable valuation methods. By using EBITDA multiples, we can accurately assess a company's performance without being influenced by financing structure, investment cycles, or differences in accounting practices. This allows us to generate consistent and comparable valuations for SMBs in various industries and stages of growth.

13.2 Industry

We recognize that each industry has its dynamics, growth prospects, and competitive landscape, which can significantly impact company valuations. By considering the industry, we can tailor our valuation approach to the specific characteristics of each sector, allowing for a more nuanced understanding of the company's position within its market and the opportunities and challenges it faces.

13.3 Business Model

A company's business model plays a vital role in determining its valuation. Factors such as asset-light or asset-heavy operations, subscription-based revenue, and customer lifetime value can significantly impact a business's value. By analyzing each company's unique business model, we can better understand the underlying drivers of value and provide a more accurate valuation that reflects the business's true potential.

13.4 Size of the Company

Company size can also have a significant impact on valuation. Smaller businesses may need help finding buyers or securing succession, which can affect their valuations. Considering the

company's size, we can better understand the unique dynamics of SMB valuations and adjust [our approach](#) accordingly.

13.4.1

Entrepreneurial Investors with Long-Term Focus

As a financial buyer, we identify ourselves as entrepreneurial investors. This means that we invest capital into the companies we acquire and bring our entrepreneurial spirit, expertise, and experience to help drive growth and success. We see ourselves as long-term investors, committed to providing more scale and a better customer experience across omnichannel platforms by implementing the needed [digital transformation](#).

In conclusion, our company's primary focus on EBITDA multiples, industry, business model, and company size, combined with our entrepreneurial approach and long-term investment horizon, allows us to provide accurate, insightful, and tailored valuations for SMBs. By considering these key factors, we can better serve our clients and help them make more informed decisions about the value of their businesses and potential acquisitions or investments.

14 Conclusion



Throughout this guide, we have explored the different methods and factors that play a critical role in determining the value of small and medium-sized businesses. By understanding the intricacies of various valuation methods, industry influences, company size, and the importance of the business model, you can make more informed decisions when it comes to assessing a company's worth.

We have also discussed the unique situations where a company may have no value or even negative value, and how our firm recognizes the potential in carefully selected turnaround opportunities. We aim to transform distressed companies into successful, thriving businesses by leveraging our expertise and adopting a strategic approach.

Whether you are an entrepreneur seeking to value your business, an investor searching for promising opportunities, or a business owner considering a merger or acquisition, having a comprehensive understanding of SMB valuation will help you make informed decisions that can lead to long-term success. Remember that the valuation process is as much an art as a science, and a deep understanding of the various factors and considerations will allow you to unlock the actual value of any business

In a world where valuations can make or break deals, having a clear and accurate understanding of a company's worth is invaluable.

Lukas Hertig

[Tweet](#)

Scale Like a Pro: Strategies for Thriving at Every Level of Your Company's Expansion

Understanding the distinctions between working IN, ON, and ON TOP of your company is essential for any entrepreneur or business owner looking to grow their venture successfully and sustainably.

Lukas Hertig

[Tweet](#)

Introduction: Navigating the Different Layers of Scaling Your Company

Introducing our Example – a Coffee Shop

Before diving into the intricacies of scaling a company, let's take a moment to introduce our coffee shop example. This

small, local coffee shop is known for its high-quality coffee, friendly service, and cozy atmosphere. It has a loyal customer base and a strong reputation within the community. As the owner of this thriving business, you may be considering growing and expanding your operations to reach even more customers and increase profitability.

At its core, the coffee shop relies on a few essential components to function effectively. These include sourcing and preparing quality coffee beans, providing excellent customer service, maintaining a clean and inviting environment, and managing inventory and supplies. As the business grows, each of these components must also scale to ensure your customers' continued success and satisfaction.

Understanding Scaling: What It Is and Why It's Needed



Scaling a company refers to the process of growing your business in a sustainable and efficient manner. It involves expanding your operations, increasing revenue, and adapting to the market's growing demands while maintaining or improving profitability. Scaling is crucial for businesses that want to remain competitive, capitalize on new opportunities, and achieve long-term success.

When scaling a business, it's essential to carefully consider the various aspects that growth will affect, such as staffing, infrastructure, and customer experience. Scaling your [company involves making strategic decisions about how to invest](#) resources, improve processes, and expand your offerings to meet the needs of a larger customer base. It's not just about getting bigger; it's about growing smarter.

In the context of our coffee shop example, scaling might involve opening new locations, expanding the menu to include additional food items, or developing a strong online presence to reach a wider audience. As a [business owner](#), you must navigate the complexities of scaling while ensuring that the quality, customer service, and overall experience that made your coffee shop successful in the first place are not compromised.

Now that we have established the context of our coffee shop and the importance of scaling, we can explore the different layers of business growth – working IN, ON, and ON TOP of the company – to better understand how these concepts impact the process of the scaling and the challenges and opportunities that come with it.

Implementing Scale

Scaling a company is an exciting and challenging endeavor that involves navigating the complex process of growing your business while maintaining efficiency, profitability, and company culture. Understanding the difference between working IN, ON, and ON TOP of your company can significantly impact how you approach scaling and ultimately determine the success of your efforts. In this comprehensive guide, we will explore these distinct layers of business growth, the unique challenges associated with each, and how to effectively manage the different aspects of your company.

To provide a relatable context for our discussion, we will use the example of a coffee shop throughout the [blog](#) post. This coffee shop will serve as a case study to illustrate the concepts and strategies we discuss, providing practical insights into how these ideas can be applied to a real-world business.

Let's begin by understanding the differences between working IN, ON, and ON TOP of the company. Working IN the company involves being directly involved in daily operations and frontline tasks, such as serving customers, preparing products, and managing inventory. In our coffee shop example, this would include making coffee, taking orders, and cleaning the store. This hands-on [approach allows business](#) owners to deeply understand their business and maintain a strong connection with their customers.

Working ON the company, on the other hand, involves taking a step back from daily operations to focus on creating systems and processes that can support growth and expansion. This might include developing efficient workflows, automating tasks, and hiring employees to delegate work. In the context of our coffee shop, this could involve implementing a new point-of-sale system or creating a staff training program.

Finally, working ON TOP of the company or a group of companies involves a strategic approach to business growth, focusing on high-level decisions that can significantly impact the company's direction and market position. This might include securing investors, entering new markets, or acquiring competitors. Our coffee shop example could involve opening new locations, developing a franchise model, or [partnering](#) with suppliers to integrate the supply chain vertically.

Now that we have a clear understanding of the differences between working IN, ON, and ON TOP of a company, we can delve deeper into the challenges and benefits associated with each layer and the people aspect of scaling a company. This will

provide you with a comprehensive framework for approaching growth and ensure you are well-equipped to tackle the unique challenges of scaling your business.

Overall Challenges with Scaling a Company and How to Do It



Scaling a company comes with its unique set of challenges. Business owners must be prepared to tackle these obstacles head-on to grow their operations successfully. In this section, we will explore the common challenges associated with scaling and provide actionable insights on how to address them.

▪ Identifying the Right Time to Scale

One of the most critical decisions a business owner must make is determining when to scale their company. Scaling too soon can lead to overextended resources and operational inefficiencies while waiting too long can result in missed opportunities and stagnant growth. To identify the right time to scale, consider factors such as consistent revenue growth, market demand, and your team's and infrastructure's readiness.

▪ Balancing Growth and Profitability

As you scale your business, you must balance growth and

profitability. Rapid expansion can often come at the expense of profits, while focusing solely on profitability may limit your growth potential. To achieve a healthy balance, consider implementing strategies that improve operational efficiencies, such as process automation and outsourcing while investing in growth areas like marketing and product development.

▪ Maintaining Company Culture and Values

As your company grows, it can become increasingly challenging to maintain the culture and values that made your business unique and successful in the first place. To preserve your company culture during scaling, prioritize clear communication, and involve your team in decision-making. Additionally, ensure that your hiring process is aligned with your values, and invest in ongoing training and development programs to foster a strong, cohesive team.

▪ Building the Right Team and Hiring for Growth.

The success of your scaling efforts largely depends on the strength and capabilities of your team. Building the right team involves hiring for current needs and anticipating the future needs of your growing business. Develop a strategic hiring plan that outlines the roles and skills needed at various stages of growth. Additionally, invest in employee retention and development to nurture and grow the talent within your organization.

▪ Adapting to Market Changes and Competition

As you scale your business, it's crucial to remain agile and responsive to market and competitive landscape changes. Stay informed about industry trends, customer preferences, and competitor activity to identify new opportunities and threats. Regularly review and update your business strategy to ensure it remains aligned with your growth goals and market conditions.

▪ **Managing Increased Complexity**

Scaling a company often involves increased complexity in terms of operations, management, and decision-making. Implement systems and processes that promote efficiency and organization to manage this complexity effectively. Consider adopting project management tools, CRM systems, and financial management software to help streamline various aspects of your business.

In conclusion, scaling a company is a complex and challenging process that requires careful planning, strategic decision-making, and adaptability. By addressing the challenges outlined in this section, you can better position your business for long-term success and sustainable growth.

Working IN the Company: The Frontlines of Your Business



In this section, we'll discuss the importance of working IN the company, its roles and responsibilities, the challenges associated with it, and the benefits it offers.

A. Roles and Responsibilities

1. **Open Store:** Ensuring the store is ready for business by turning on lights, setting up displays, and preparing equipment for use.
2. **Make Coffee:** Preparing coffee and other beverages by following recipes and using appropriate brewing techniques, ensuring consistent quality and taste.
3. **Serve Customers:** Providing friendly and attentive customer service by taking orders, answering questions, and attending to any customer needs or concerns.
4. **Order Supplies:** Keeping track of inventory and placing orders for necessary supplies, such as coffee beans, cups, and cleaning materials, to ensure the smooth operation of the business.
5. **Sweep Floors:** Maintaining a clean and inviting environment by sweeping floors, wiping down surfaces, and performing other routine cleaning tasks.

B. Challenges

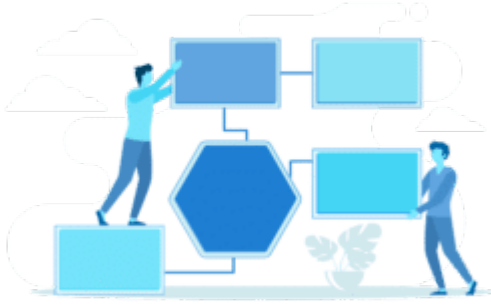
1. **Managing Daily Operations:** Overseeing the various tasks and responsibilities required to keep the business running smoothly, from managing staff schedules to troubleshooting equipment issues.
2. **Ensuring Customer Satisfaction:** Consistently delivering high-quality products and services to customers, promptly addressing any issues or concerns, and fostering an environment that encourages repeat business.
3. **Prioritizing Tasks and Time Management:** Juggling multiple tasks and responsibilities, often with limited time and resources, requiring effective prioritization and time management skills.

C. Benefits

1. **Gaining a Deep Understanding of the Business:** Working directly in the day-to-day operations of the company provides a hands-on understanding of the business, its processes, and its unique challenges, allowing for more informed decision-making and problem-solving.
2. **Building Relationships with Customers:** Engaging with customers personally helps foster loyalty and provides valuable feedback that can be used to improve products and services.
3. **Identifying Areas for Improvement and Growth:** Being on the frontlines of the business allows for the identification of inefficiencies, bottlenecks, and areas of opportunity, which can inform strategic planning and drive growth initiatives.

In conclusion, working IN the company is an essential aspect of running a successful business, particularly in its early stages. By being actively involved in the daily operations, business owners can gain invaluable insights, build strong customer relationships, and identify opportunities for growth and improvement. As the business scales, it's crucial to maintain a connection to this frontline perspective while also focusing on the higher-level growth aspects, as discussed in the following sections.

Working ON the Company: Creating Systems and Processes for Growth



In this section, we will explore the concept of working ON the company, focusing on the roles and responsibilities, challenges, and benefits of this scaling aspect. We will also discuss the digital aspects, including automation, [cloud computing](#), and AI, which can help streamline operations and enable growth.

A. Roles and Responsibilities

1. **Create and Install Systems:** Developing and implementing systems to support various aspects of the business, including inventory management, customer service, and financial tracking.
2. **Create Processes:** Designing efficient and standardized workflows for different business areas, such as team member onboarding, order fulfillment, and customer support.
3. **Automate Tasks:** Identifying repetitive tasks that can be automated using technology, such as email marketing, invoice processing, or appointment scheduling.
4. **Hire Employees:** Expanding your team to support the growth of the business, including recruiting, interviewing, and hiring qualified candidates.
5. **Delegate Work:** Assigning tasks and responsibilities to employees, ensuring they have the necessary resources

and support to execute their duties effectively.

B. Challenges

1. **Developing Efficient and Scalable Systems:** Designing and implementing systems that streamline current operations and adapt and scale as the business grows.
2. **Training and Managing Staff:** Ensuring employees are properly trained and equipped to handle their responsibilities and providing ongoing support and performance management.
3. **Finding and Implementing the Right Tools and Technology:** Researching, selecting, and integrating digital solutions, such as automation tools, cloud computing services, and AI technologies, to optimize business processes and support growth.

C. Benefits

1. **Streamlined Operations:** By implementing systems and processes, businesses can operate more efficiently, reducing redundancies and freeing up resources for growth initiatives.
2. **Increased Capacity for Growth:** With the right systems and processes in place, businesses are better positioned to scale their operations, handle increased customer demand, and enter new markets.
3. **Improved Overall Business Performance:** The combination of streamlined operations, increased capacity for growth, and effective use of technology can lead to improved performance across various aspects of the business, including customer satisfaction, employee engagement, and financial results.

By working ON the company, business owners can create a solid foundation for growth by developing systems, processes, and digital solutions that optimize operations and enable expansion. This strategic focus on the internal workings of

the business is crucial to scaling effectively and ensuring the company's long-term success. In the next section, we will explore the concept of working ON TOP of the company or a group of companies and how this high-level perspective can further drive growth and market success.

Working ON TOP of the Company or a Group of Companies: Strategic Expansion and Growth



In this section, we will delve into the concept of working ON TOP of the company or a group of companies, discussing the roles and responsibilities, challenges, and benefits of this high-level perspective on business growth and expansion.

A. Roles and Responsibilities

1. **Hire Operators:** Recruiting and appointing experienced executives and managers to oversee the day-to-day operations and growth initiatives of individual business units or companies within the group.
2. **Secure Investors, Mentors, and Advisors:** Building relationships with external stakeholders, such as investors and industry experts, to gain access to funding, strategic insights, and guidance that can support the company's growth and expansion plans.
3. **Enter New Verticals:** Identifying and pursuing

opportunities to expand the business into new industries or markets through organic growth or acquisitions.

4. **Integrate Supply Chain and Distribution:** Streamlining and optimizing the supply chain and distribution processes across the group of companies to reduce costs, improve efficiency, and ensure consistent product and service quality.
5. **Acquire IP, Media, and Competitors:** Pursuing strategic acquisitions of intellectual property, media assets, or competing businesses to strengthen the company's market position and enhance its growth potential.
6. **Execute Digital Transformation:** Implementing advanced technologies and digital strategies to modernize the business, improve customer experiences, and drive operational efficiencies across the group of companies.

B. Challenges

1. **Navigating Complex Business Relationships:** Managing relationships with various stakeholders, including employees, investors, suppliers, and regulatory bodies, while ensuring the interests of the group of companies are upheld.
2. **Managing Multiple Business Units and Priorities:** Overseeing the performance and growth of multiple business units or companies within the group, balancing competing priorities and allocating resources effectively.
3. **Adapting to New Industries and Markets:** Successfully entering new verticals and markets, which may involve learning new skills, adapting to different regulatory environments, and overcoming barriers to entry.

C. Benefits

1. **Diversification and Increased Revenue Streams:** Expanding into new verticals or acquiring complementary businesses

can result in diversified revenue streams, reducing reliance on a single market and increasing overall financial stability.

2. **Expanded Market Presence and Influence:** By growing the group of companies, businesses can increase their market presence, brand recognition, and influence within their industries, potentially leading to increased market share and competitive advantages.
3. **Enhanced Company Valuation and Growth Potential:** A larger, more diversified group of companies may be more attractive to investors and have a higher valuation, providing increased access to capital and opportunities for further growth and expansion.

In conclusion, working ON TOP of a company or a group of companies involves taking a strategic, high-level approach to business growth and expansion. By focusing on this perspective, business owners can capitalize on opportunities for diversification, increase their market presence and influence, and drive long-term success and profitability across the group of companies.

The People Aspect: Building the Right Team for Scaling Your Company



The success of any company's scaling efforts is closely tied to its people. This section will explore the various types and levels of people needed for different scaling phases, how to

match people to IN, ON, and ON TOP roles and the challenges associated with managing a growing team.

A. Types and Levels of People needed

1. **Entry-Level Employees:** Individuals who are responsible for executing day-to-day tasks and operations, providing the foundation for the business's core functions.
2. **Mid-Level Managers:** Professionals who oversee teams or departments, ensuring that goals are met, resources are allocated effectively, and employees are supported in their roles.
3. **Executives and Strategic Leaders:** High-level decision-makers who drive the overall vision and direction of the company, guiding growth initiatives and managing relationships with external stakeholders.

B. Matching People to IN, ON, and ON TOP Roles

1. **Identifying the Right Fit for Each Role:** Assessing candidates' skills, experience, and cultural fit to ensure they are well-suited for their respective roles within the company, whether that be working IN, ON, or ON TOP of the business.
2. **Training and Development for Different Scaling Phases:** Providing targeted training and development programs to help employees grow and adapt to their roles as the company scales, ensuring they have the necessary skills and knowledge to succeed.
3. **Empowering and Motivating Employees for Growth:** Encouraging employees to take ownership of their work, think creatively, and contribute to the company's growth initiatives, fostering a culture of continuous improvement and innovation.

C. Challenges

1. **Attracting and Retaining Talent:** Competing for top talent in a competitive job market, offering attractive compensation packages, and providing opportunities for growth and development to retain valuable employees.
2. **Balancing the Needs of the Organization with Employee Growth:** Ensuring the company's scaling objectives are met while supporting employees' professional growth and development, creating a mutually beneficial environment.
3. **Developing Effective Communication and Collaboration Strategies:** Facilitating open and transparent communication across all levels of the organization, promoting collaboration, and ensuring that employees are aligned with the company's vision and goals as it scales.

In conclusion, building the right team for scaling your company is critical to successful growth. By carefully selecting the right individuals for each role, providing targeted training and development, and fostering a culture of empowerment and motivation, businesses can create a strong foundation for long-term success as they scale. Recognizing the unique challenges of managing a growing team and developing strategies to address these challenges will further support the company's growth and development.

Knowing When to Sell: Evaluating the Right Time Based on Scalability Level



This section will discuss another crucial aspect of scaling a business: understanding when it might be the right time to sell your company based on its scalability level. Knowing when to exit can be just as important as knowing when and how to grow, as it can significantly impact the value you receive for your business.

A. Assessing Your Company's Scalability

1. **Analyzing your growth potential:** Assess the realistic growth opportunities for your business based on market trends, competitive landscape, and available resources.
2. **Evaluating the effectiveness of your systems and processes:** Determine whether your company's systems and processes are scalable and efficient enough to support continued growth without compromising performance.
3. **Gauging your team's ability to support growth:** Consider whether your team has the necessary skills, experience, and capacity to drive growth initiatives and manage an expanding business.

B. Identifying the Right Time to Sell

1. **Maximizing company value:** Selling your business when it has reached its maximum potential value, considering factors such as revenue growth, profitability, and market share.
2. **Market conditions:** Evaluating the state of the market and industry, including trends, competition, and

potential buyer interest, to determine if it's a favorable time to sell.

3. **Personal considerations:** Consider your personal goals, financial needs, and desired level of involvement in the business and how these factors may influence your decision to sell.

C. Preparing for a Successful Exit

1. **Enhancing company value:** Implementing strategies to boost your company's value, such as improving profitability, strengthening customer relationships, and optimizing operations.
2. **Developing a transition plan:** Creating a plan to ensure a smooth transition for your team, customers, and other stakeholders, as well as outlining your own exit strategy and post-sale involvement.
3. **Engaging professional assistance:** Working with experienced advisors, such as accountants or legal professionals, to help you navigate the complexities of selling your business and achieving the best possible outcome.

In conclusion, knowing when to sell your company based on its scalability [level](#) is essential to business growth and exit planning. By carefully assessing your company's growth potential, market conditions, and personal considerations, you can identify the right time to sell and maximize the value of your business. Preparing for a successful exit by enhancing company value, developing a transition plan, and engaging professional assistance will further ensure a smooth and profitable sale.

Conclusion

In this blog post, we have explored the crucial differences between working IN, ON, and ON TOP of your company and the

various implications for scaling a business. Understanding these distinctions is essential for any entrepreneur or business owner looking to grow their venture successfully and sustainably.

Strategic planning and execution are vital components of scaling a business. They enable companies to navigate the challenges associated with growth while capitalizing on opportunities to expand market presence and increase profitability. By creating effective systems and processes, leveraging digital technologies, and adopting a high-level perspective on growth, businesses can lay the groundwork for long-term success.

The people aspect of scaling cannot be underestimated, as building the right team for each growth stage is paramount to achieving your company's goals. Ensuring that employees are well-suited to their roles, well-supported, and motivated to contribute to the company's growth initiatives is key to fostering a strong organizational culture.

As a business owner or entrepreneur, we encourage you to evaluate your current approach to scaling and consider optimizing your efforts by examining the roles you play in your business, whether it be working IN, ON, or ON TOP of the company. By recognizing the unique challenges and opportunities associated with each aspect, you can make informed decisions that drive your company's sustainable growth and long-term success.

Knowing when to sell your company based on its scalability level is an essential aspect of business growth and exit planning; by carefully assessing your company's growth potential, market conditions, and personal considerations, you can identify the right time to sell and maximize the value of your business.

Lukas Hertig

[Tweet](#)

Navigating Controversies in Humanistic Capitalism: A Guide for Business Leaders

Introduction

Humanistic capitalism is a term that refers to a type of business approach that prioritizes not only financial success, but also the well-being of individuals, society, and the environment. At 23.investments, we believe in this holistic [approach to business](#), and it is reflected in the values that drive our company.

The purpose of this [blog](#) post is to delve into these values and their importance in business. We will explore the controversies surrounding humanistic capitalism, the concept of a fair and equitable profit, the balance between giving and taking, the importance of upholding ethics, morality, and dignity, and the need for sustainability.

Through this blog post, we aim to not only articulate our values, but also provide an outlook into the future, and the role that humanistic capitalism will play in shaping it. Our goal is to spark a conversation and encourage businesses to consider their own values and the impact they have on society, the environment, and the economy.

The Importance of a Fair Profit

Profit is a critical component of any [successful business](#), but not all profits are created equal. In this section, we'll delve into the difference between fair and unfair profit and why a fair profit is essential for the long-term success of a business.

The Role of Profit in Business

Profit is the financial reward for taking a risk and building a successful enterprise. It's what allows businesses to grow, invest in new products and services, and provide a [return on investment](#) for shareholders.

The Difference between Fair and Unfair Profit

While profit is essential for [business success](#), there is a difference between fair and unfair profit. Fair profit is earned through hard work, innovation, and providing value to customers. It's a reward for [building a successful business](#) that contributes to the community and the economy.

On the other hand, unfair profit is earned through exploitation, price gouging, and taking advantage of others. It's a short-term strategy that sacrifices the long-term health of the business and its stakeholders.

How a Fair Profit Contributes to the Success of a Business

A fair profit is essential for the long-term success of a business. It creates a virtuous cycle of growth and prosperity, where businesses are able to reinvest in their products and services, provide good jobs to employees, and contribute to the community.

In contrast, an unfair profit creates a vicious cycle of exploitation, where businesses focus on short-term gains at the expense of their employees, customers, and the community. This approach is not sustainable and ultimately leads to the downfall of the business.

The Impact of Fair Profit on Employees and Customers

A fair profit has a positive impact on both employees and customers. When businesses earn a fair profit, they are able to provide good jobs with competitive wages and benefits. This creates a stable and productive workforce that is invested in the success of the business.

For customers, a fair profit means that they are paying a [fair price for products and services that deliver real value](#). This creates a loyal customer base that is invested in the success of the business.

In conclusion, a fair profit is essential for the long-term success of a business. It creates a virtuous cycle of growth and prosperity and has a positive impact on both employees and customers.

Balancing Giving and Taking

Balancing giving and taking is an important aspect of humanistic capitalism and an essential part of a business's success. Businesses and society are interdependent and it is crucial for businesses to give back to the community that supports them. In this section, we will explore the importance of balancing giving and taking and the benefits it can bring for both businesses and society.

The Interdependence of Business and Society

Businesses rely on society for support and resources, and in return, they have a responsibility to contribute to society's well-being. By giving back, businesses can create a positive impact on the communities they operate in and foster a sense of goodwill towards their brand.

The Importance of Giving Back to the Community

Giving back to the community can take many forms, from charitable donations to volunteering time and resources. It is an opportunity for businesses to demonstrate their commitment to making a positive impact and to show that they care [about](#) the people and communities they serve.

Examples of Companies That Balance Giving and Taking

There are many [companies that have successfully](#) balanced giving and taking. For example, Patagonia, the outdoor clothing company, is known for its commitment to environmental activism and uses its platform to raise awareness about environmental issues. Another example is Ben & Jerry's, the ice cream company, which has a long-standing commitment to social and environmental justice and regularly donates a portion of its profits to organizations working on these issues.

The Benefits of Balancing Giving and Taking for Businesses and Society

Balancing giving and taking can bring numerous benefits for both businesses and society. For businesses, it can increase brand loyalty, improve employee morale, and enhance their

reputation. For society, it can help address social and environmental issues, create jobs, and foster economic growth. By balancing giving and taking, businesses can create a win-win situation for themselves and the communities they serve.

Maintaining Ethics, Morality, and Dignity

Business is not just about making money, it's also about doing the right thing. Ethics, morality, and dignity are values that are critical to the [success of a company](#). Not only do they impact business decisions and relationships, but they also determine a company's reputation and success.

- The role of ethics, morality, and dignity in business: In today's world, consumers and stakeholders are increasingly demanding that companies act with integrity and make decisions that align with their values. This means that companies must be mindful of the ethical, moral, and dignified implications of their actions.
- How these [values impact business](#) decisions and relationships: Ethical, moral, and dignified behavior is key to building strong relationships with customers, employees, and other stakeholders. When a company upholds these values, it sends a message that it is trustworthy and committed to doing the right thing.
- The importance of upholding these values in the face of challenges: Maintaining ethics, morality, and dignity is not always easy, particularly when faced with difficult business decisions. However, it is important to remember that these values are critical to a company's long-term success and should not be compromised.
- The impact of maintaining ethics, morality, and dignity on a company's reputation and success: Companies that prioritize ethics, morality, and dignity are more likely to have a positive reputation and be viewed as

trustworthy by customers, employees, and other stakeholders. This can lead to increased brand loyalty, higher employee morale, and a stronger [bottom line](#).

By upholding these values, companies can demonstrate their commitment to making the world a better place and build a more sustainable future for everyone.

Sustainability

In the business world, sustainability is more than just a buzzword. It encompasses a set of practices and values that prioritize the long-term well-being of the environment, communities, and future generations. At the heart of sustainability is the idea that companies should operate in a way that leaves the world a better place than they found it.

Sustainability involves a wide range of practices, from reducing carbon emissions and waste to sourcing materials responsibly and investing in [renewable energy](#). By implementing these practices, businesses can not only improve the health of the planet but also benefit from cost savings, increased efficiency, and a stronger reputation.

In today's world, consumers are increasingly demanding that companies act in a responsible and sustainable manner. By taking the lead in sustainability, businesses can build a loyal customer base, attract top talent, and create a better future for everyone.

Moreover, companies can play a crucial role in driving global sustainability efforts. By investing in renewable energy, reducing waste, and sourcing materials responsibly, businesses can help to mitigate the effects of climate change, conserve natural resources, and create a more sustainable future for all.

Controversies and Criticisms

The concept of humanistic capitalism and its values have faced numerous controversies and criticisms in the business world. Some argue that these values are not practical and cannot coexist with the traditional profit-driven approach of capitalism. Others argue that these values are idealistic and not feasible in the real world of business. In this section, we will delve into these controversies and criticisms and explore how they can be addressed.

One of the most common criticisms of humanistic capitalism is that it is not practical and cannot coexist with the traditional profit-driven approach of capitalism. Critics argue that businesses need to prioritize profits in order to succeed and that placing ethical and moral considerations above profits is simply not feasible. However, it is important to note that humanistic capitalism does not advocate for completely sacrificing profits, but rather for finding a balance between making a [fair profit and upholding ethical and moral values](#).

Another criticism of humanistic capitalism is that it is idealistic and not feasible in the real world of business. Critics argue that these values are not realistic and that businesses need to make difficult decisions in order to succeed. However, it is important to remember that humanistic capitalism is not about creating a perfect world, but rather about creating a better one. By prioritizing ethics, morality, dignity, and sustainability, businesses can still be successful while also making a positive impact on the world.

In order to address these controversies and criticisms, it is important for businesses to be transparent and honest about their values and practices. By openly discussing their approach to business and the values that drive their decisions, companies can show that they are committed to

[humanistic capitalism](#) and demonstrate the practicality and feasibility of these values in the world of business.

Overall, it is important for businesses not to be afraid of the controversies and criticisms surrounding humanistic capitalism and its values. By addressing these challenges head on and demonstrating the practicality and feasibility of these values, businesses can lead the way towards a better and more sustainable future for all.

The Future of Humanistic Capitalism

In the world of business, the future is always uncertain. But one thing is for sure, the values that drive humanistic capitalism are here to stay. As companies continue to grow and evolve, they are also becoming more conscious of their impact on society and the environment. The future of business is one where companies not only focus on their bottom line, but also prioritize ethics, morality, and dignity, balancing giving and taking, and sustainability.

The future of business is one where companies are guided by the principles of humanistic capitalism. This means that companies will continue to prioritize values such as ethics, morality, and dignity, as well as sustainability, in their operations. As companies become more conscious of their impact on society and the environment, they will also continue to balance giving and taking, and strive for a fair profit.

Shaping the Future of Business

The principles of humanistic capitalism have the potential to shape the future of business in a positive way. Companies that prioritize these values will not only be more successful but will also have a positive impact on society and the environment.

Impact on Future Generations

The impact of humanistic capitalism on future generations is significant. By prioritizing values such as sustainability, companies are helping to create a better future for all.

Leading the Way

Businesses have a unique opportunity to lead the way towards a more sustainable and equitable future. By embracing humanistic capitalism, companies can become role models for others and help drive positive change in the world.

In conclusion, the future of humanistic capitalism is bright, and companies that embrace these values will be well-positioned for success in the years to come. By balancing giving and taking, upholding ethics, morality, and dignity, and prioritizing sustainability, businesses can make a positive impact on society and the environment, while also achieving success and profitability.

Conclusion

In conclusion, humanistic capitalism and its values of fair profit, balancing giving and taking, maintaining ethics, morality, and dignity, and sustainability, are becoming increasingly important in today's business world. As [businesses continue](#) to grow and evolve, it is crucial that they prioritize these values and strive to create a positive impact not just on their bottom line, but on society as a whole. The future of business lies in humanistic capitalism, where companies not only seek to make a profit, but also contribute to the well-being of their employees, customers, and the environment. By embracing these values, businesses can not only achieve success, but also help create a better future for all.

As a private investment firm, we believe in the power of

humanistic capitalism and its values to drive success in business. The importance of fair profit, balancing giving and taking, maintaining ethics, morality, and dignity, and promoting sustainability cannot be overstated. These values not only shape a better future for society and the environment but also contribute to the long-term success and stability of a business. At 23.investments, we prioritize these values when evaluating potential investment opportunities and believe that they are key factors in ensuring the success of the companies and teams we [partner](#) with.